



TEDERIC



WECHAT

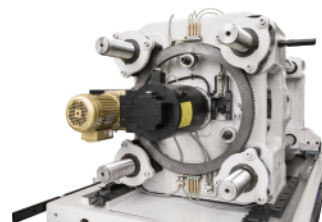
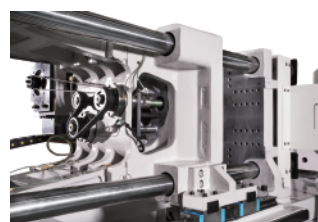
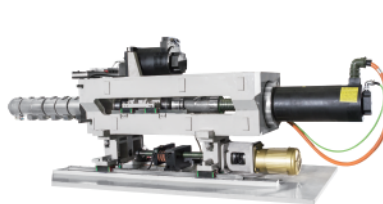


WEB

TEDERIC MACHINERY MOLDING DREAMS

DEseries

All-electric Machine



www.tederic-cn.com

TEDERIC

泰瑞机器股份有限公司
TEDERIC MACHINERY CO.,LTD.

ADD: No 245 North Wenzhe Road, Hangzhou Economic &
Technological Development Area, China
P.C.: 310018
TEL: +86-571-86733376
EMAIL: tederic@tederic-cn.com

www.tederic-cn.com



TE2015.10-DE-03-HZ



DE series all-electric injection molding machines based on
TEDERIC innovative dream platform

Highly responsive and precise direct driving technology

The latest solutions for industries of the aseptic environment
medical, package, optics and auto parts, etc

Clamping force from 55 – 460 ton

Product platform

D:DREAM

D(T)

D(T)/i

D(T)/M

D(T)/Ji

D(T)/Jii

DH

DH/i

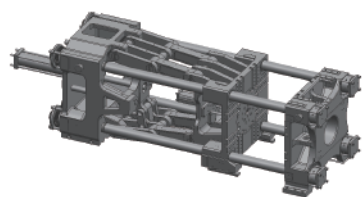
DH/Ji

DH/Jii

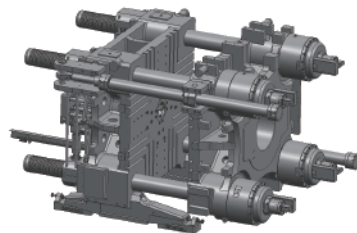
DE

DE/E

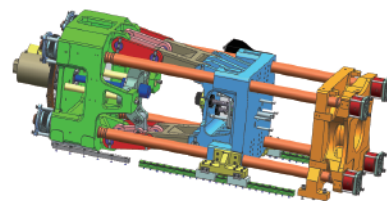
Prime code of clamping unit



T: Hydraulic toggle type three-platen clamping structure



H: Hydraulic locking two-platen clamping structure



E: Electric toggle type three-platen clamping structure

Prime code of injection unit



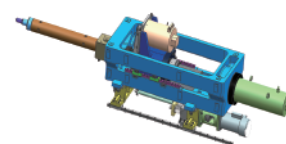
i: Two-cylinder injection reciprocating screw structure



M: Single-cylinder injection reciprocating screw structure



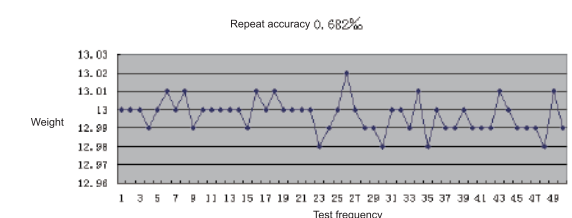
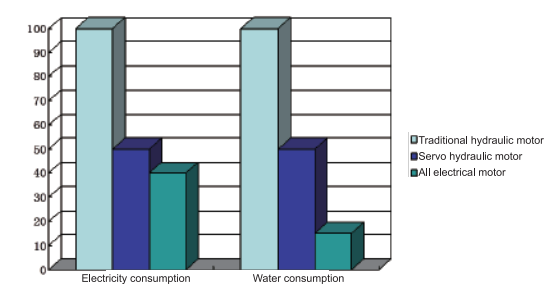
J: Extruded injection structure



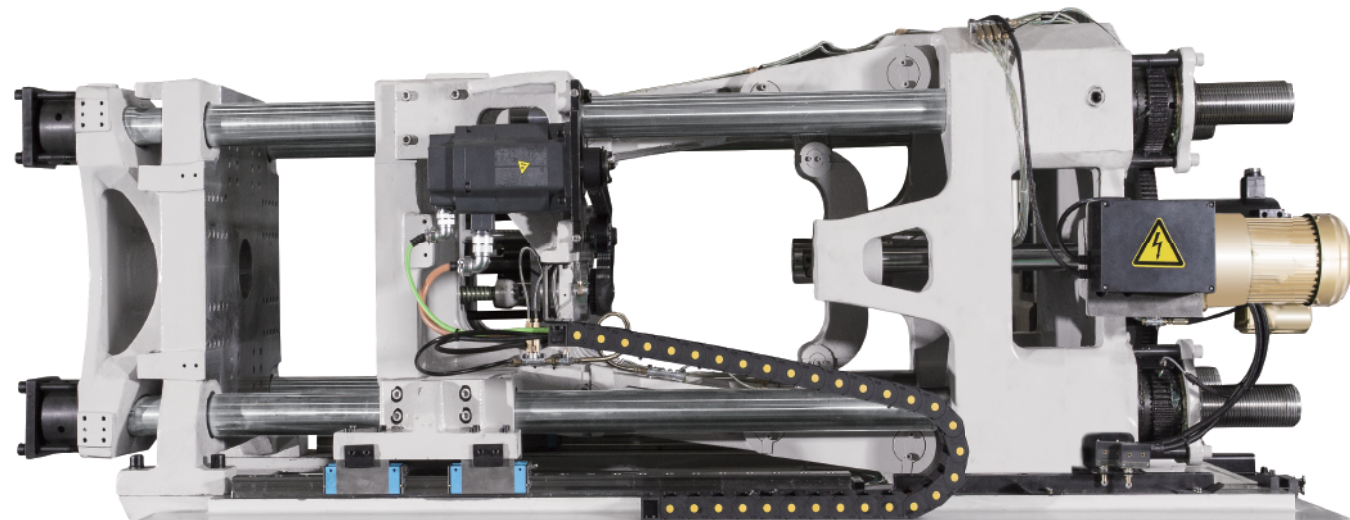
E: Electric injection structure



- ◎ **Environmental protection:** realize the clean working condition by non-use of hydraulic oil.
- ◎ **Rapidity:** synchronized multiple movement, cycle time.
- ◎ **Accuracy:** stroke precision up to 0.01mm, mold protection and production quality are guaranteed.
- ◎ **High precision:** low unacceptability on products, superior repeatability in production with high efficiency.
- ◎ **Tranquility:** Low noise with more comfortable environment.
- ◎ **Energy-saving:** economize 25-80% water consumption and 80-90% electricity consumption than traditional hydraulic motor.

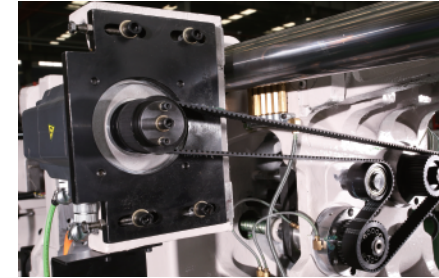


- ◎ Direct connection between servo motor and transmission ball screw
- ◎ Toggle structure with 5 pins and self-lock
- ◎ Heavy loaded guider device supported by linear track
- ◎ Diagonally designed ejection structure
- ◎ Clamping structure with high rigidity
- ◎ Automatic mold adjustment with accuracy



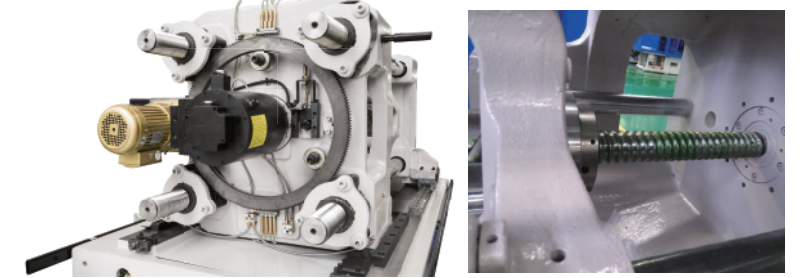
◎ Diagonally designed ejection structure

Diagonally designed ejection structure driven by servo motor, move tranquilly and precisely.



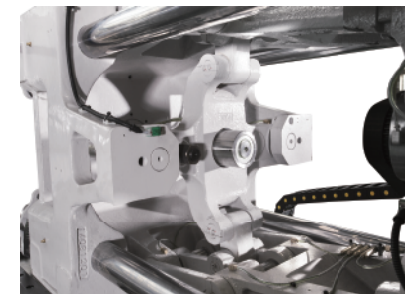
◎ Direct connection between servo motor and transmission ball screw

The highlights of non-hysteresis, non-dust, more accurate allocation and more tranquility are the obvious achievement of rigid connection between servo motor and ball screw compared with traditional belt transmission system.



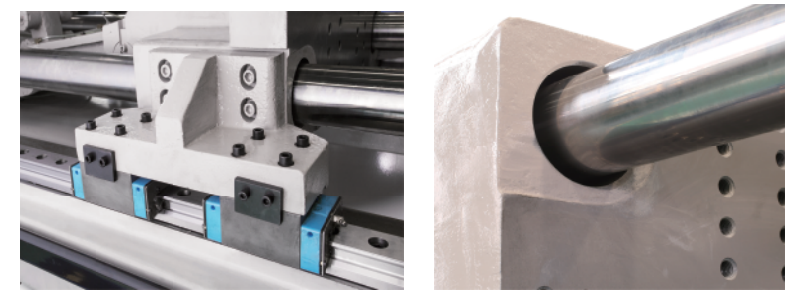
◎ Self-lubricating motion pair

The graphite copper sleeve of self-contained lubrication and # 2000 non-oil slide are utilized at toggle joints, greatly reducing friction, saving lubricating oil and keeping the machine clean.



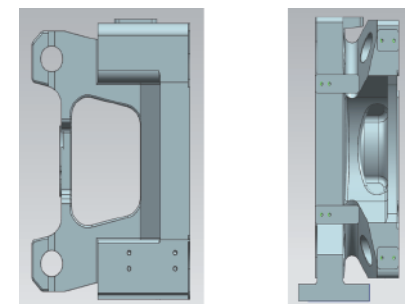
◎ Heavy loaded guider device supported by linear track

Heavy loaded guider device supported by linear track that up-level the parallelism between molds, and improve the cleanliness circumstance around mold by lubrication-free on tie bar for its guider function has been replaced.



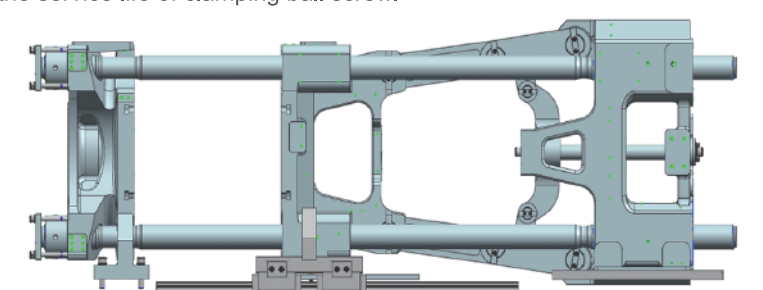
◎ Clamping structure with high rigidity

Guarantee the molds to receive strength evenly and lengthen the service-life of molds.

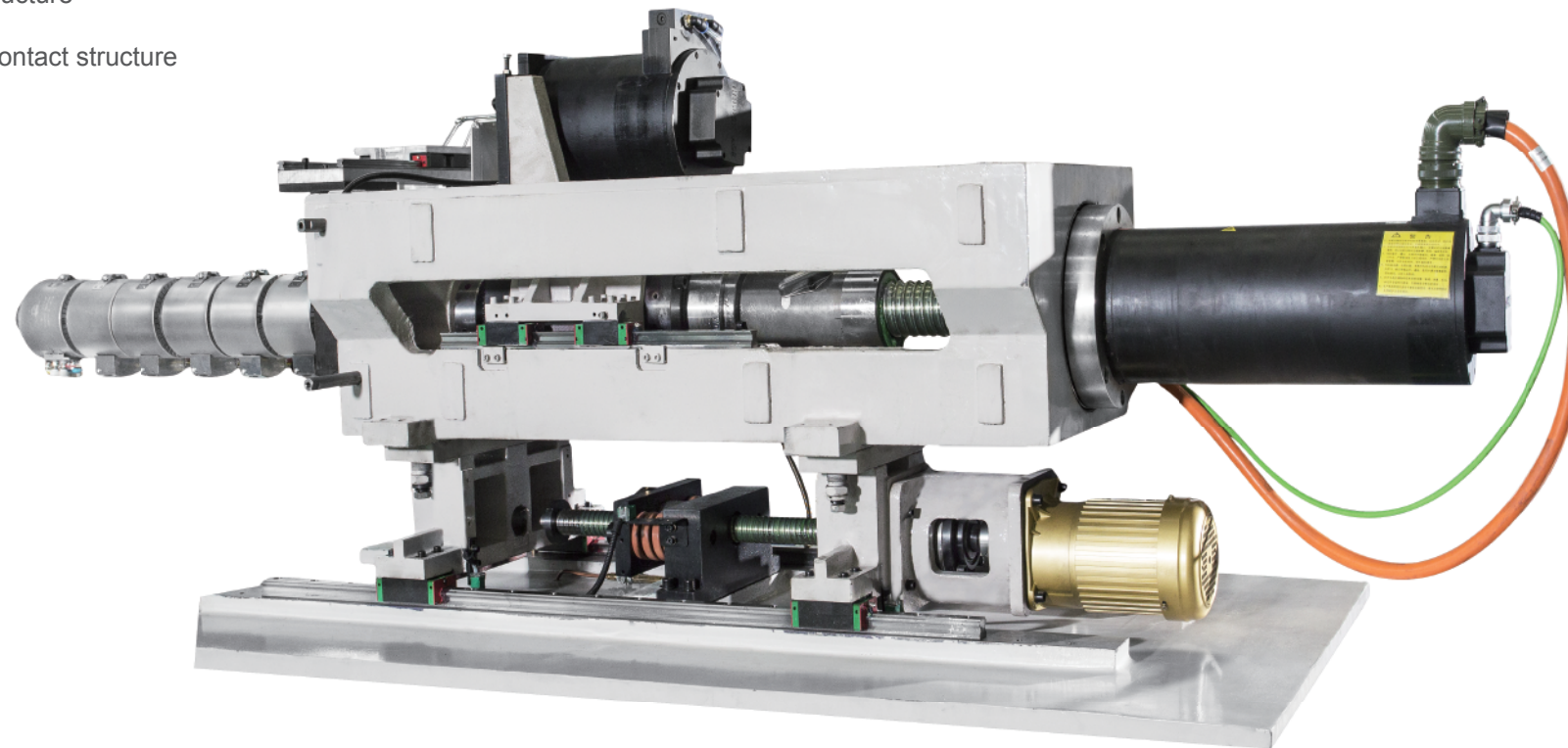


◎ Toggle structure with 5 pins and self-lock

Toggle structure with 5 pins and self-lock, lead to smooth mold open/close. Structure self-lock after high-pressure clamping, lengthen the service life of clamping ball screw.

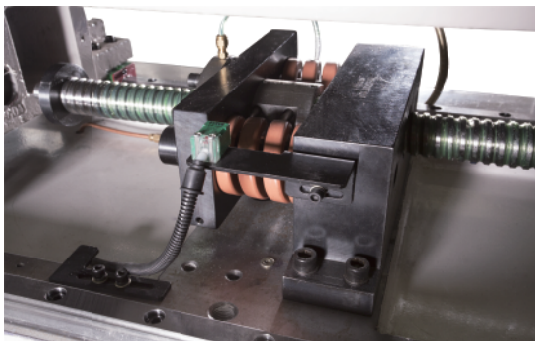


- ◎ Direct connection between servo motor and transmission ball screw
- ◎ Zero-torque injection guider structure
- ◎ Constant force output nozzle contact structure
- ◎ Unitary injection seat



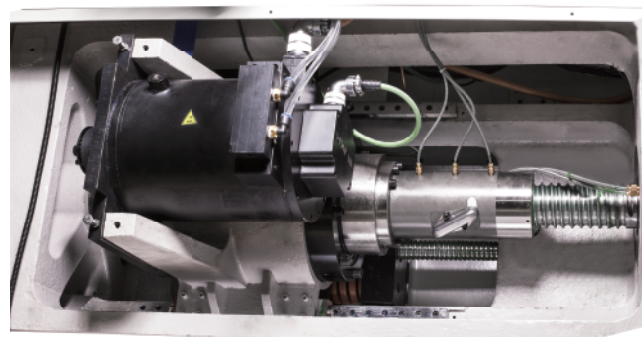
◎ Constant force output nozzle contact structure

After the nozzle contacts with the mold, a constant contact force is output by the compression of two rectangular spring and could also be adjusted by modulating the proximity switch.



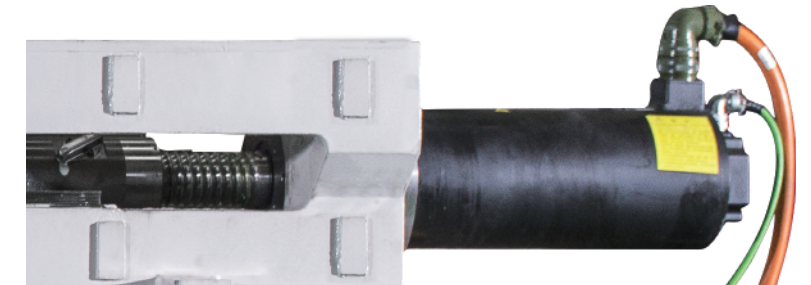
◎ Screw driven by servo motor and transmission belt

Screw driven by servo motor and transmission belt, flexible structure of tough adaptation.



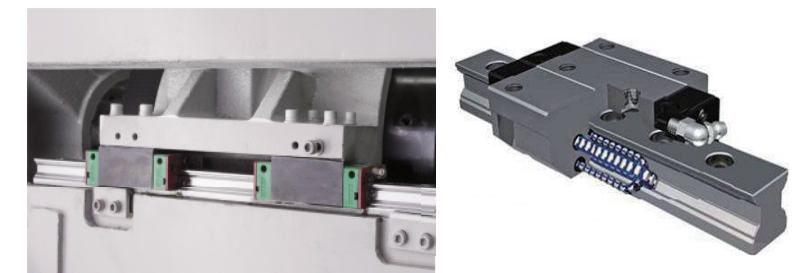
◎ Direct connection between servo motor and transmission ball screw

Rigid connection between customized servo motor of low speed high torque and ball screw of high load capacity, resulting non-hysteresis, non-dust and tranquil operation.



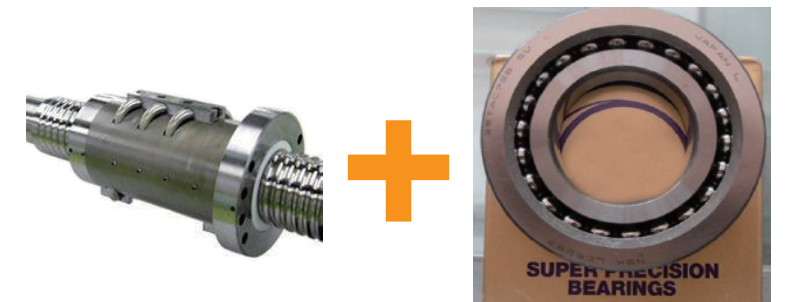
◎ Zero-torque injection guider structure

Utilization of cylindrical roller linear guide, less friction, faster system response and more smooth operation. Guider and injection unit at the same horizontal, extend the service life of injection unit.



◎ Ball screw of high load capacity with matched support bearing

Best matched devices guarantee the precision and efficiency for injection structure.

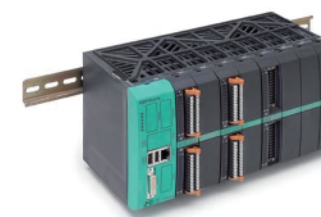


- ◎ High performance controller
- ◎ Common DC bus drive system
- ◎ Precision feedback components
- ◎ Program specialized for all electrical injection molding machine

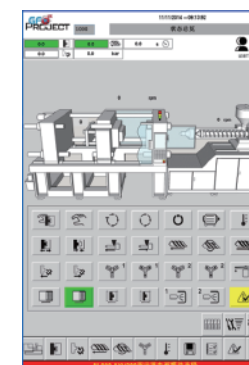


Features of control unit

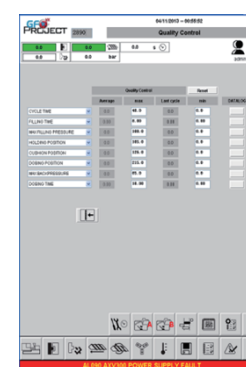
- ◎ 15" Color Touch Screen.
- ◎ CPU main frequency up to 1GHz, the program scan cycle shortened to 1ms.
- ◎ Highly efficient switchover between injection and pressure holding (200μs).
- ◎ Controller of modularization, I/O points could be arranged according requirement.
- ◎ Industrial Ethernet technology, remote monitoring, cluster networking.



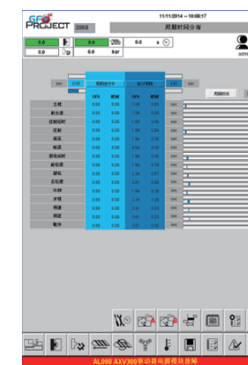
Machine status



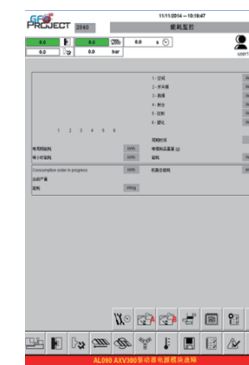
Quality control



Movement cycle



Power consumption inspection



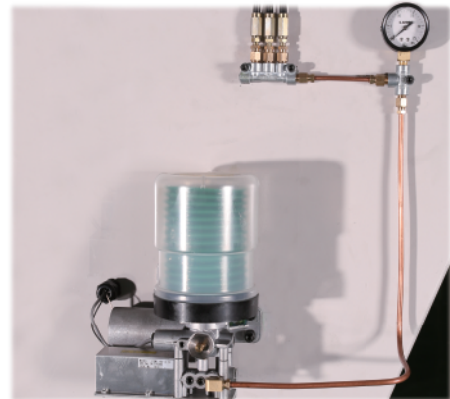
- ◎ Simplified electrical cabinet design



- ◎ Common DC bus drive system

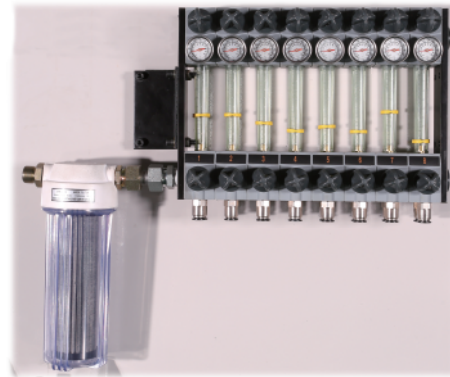
Loop-closed control of allocation, velocity and pressure, scan cycle shortened to 250μs, more efficient response, and higher precision.





© Professional lubrication system

Specialized auto-lubrication system, which prevent the malfunction caused by inadequate lubrication and lengthen the service-life of machine.



© Chiller filter

Filters are installed at inlet pipe, filter out large particles of impurities in the cooling water, keep the unobstruction of water pipe in motor and mold.

© Mechanical safety switch

Safe door with magnetic locking device, to ensure maximum safety for operating personnel.

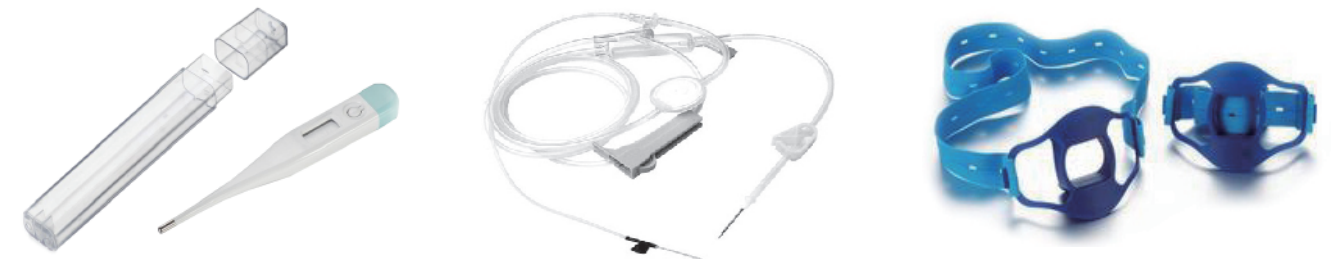


© Frame of high rigidity



Medical

DE (all electrical IMM) guarantees zero-oil pollution at products forming zone by lubrication-free on tie bar, perfectly match the requirement of products with high cleanness, such as medical and water purification industry.



Optical

DE (all electrical IMM) obtains the features of clean and quick response, which lead DE to be the optimal choice of sophisticated plastic products manufacture. Multiple toggles linkage reduce the cycle time of production and increase the profits for customers.



Auto parts

DE (all electrical IMM) is appropriate for all kinds of plastics, widely used in auto parts industry.

